

MODULE 9 L01

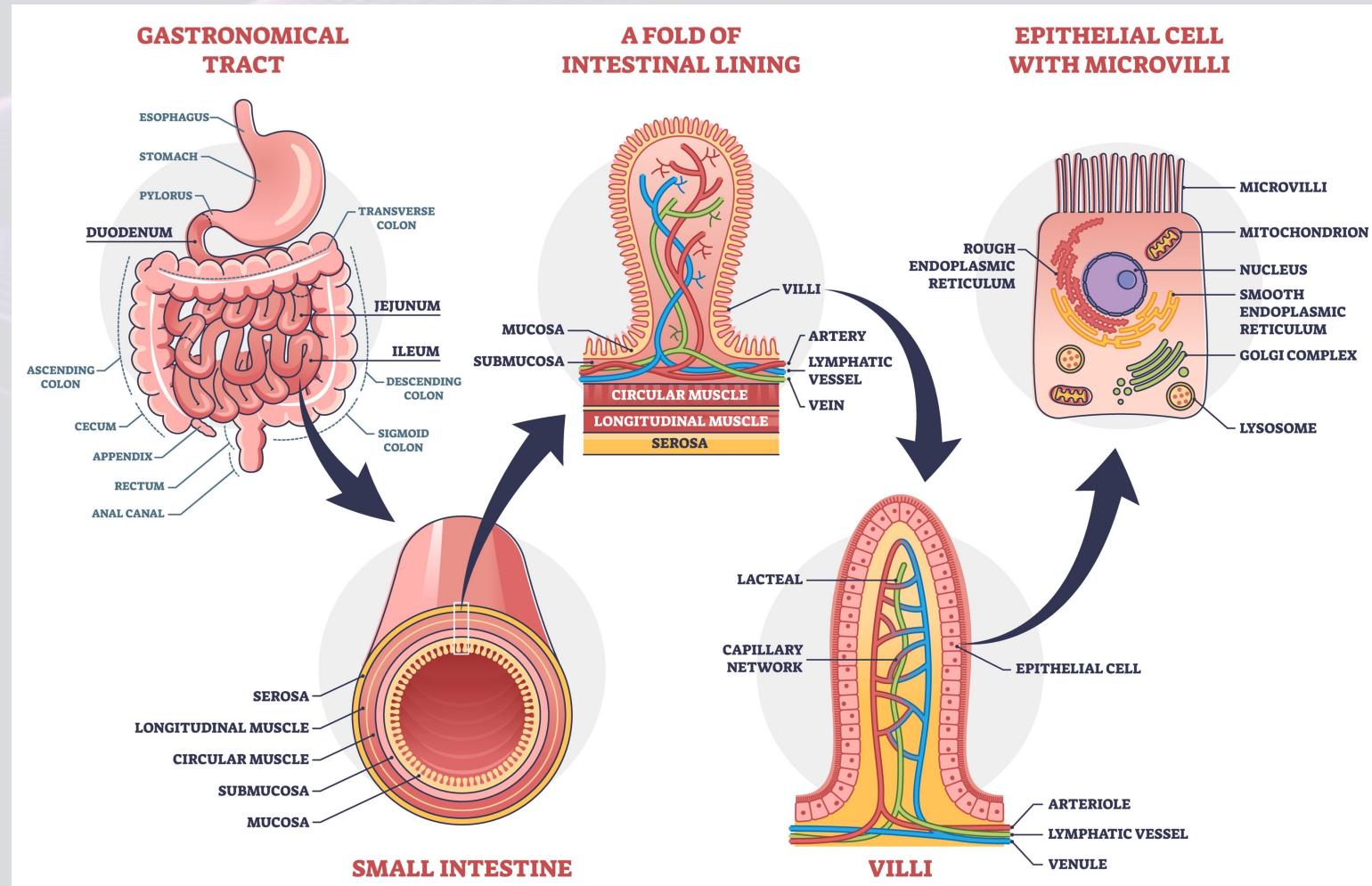
Digestive System: Small Intestine Histology

Dr. Lisa Brinn
lbrinn@fiu.edu



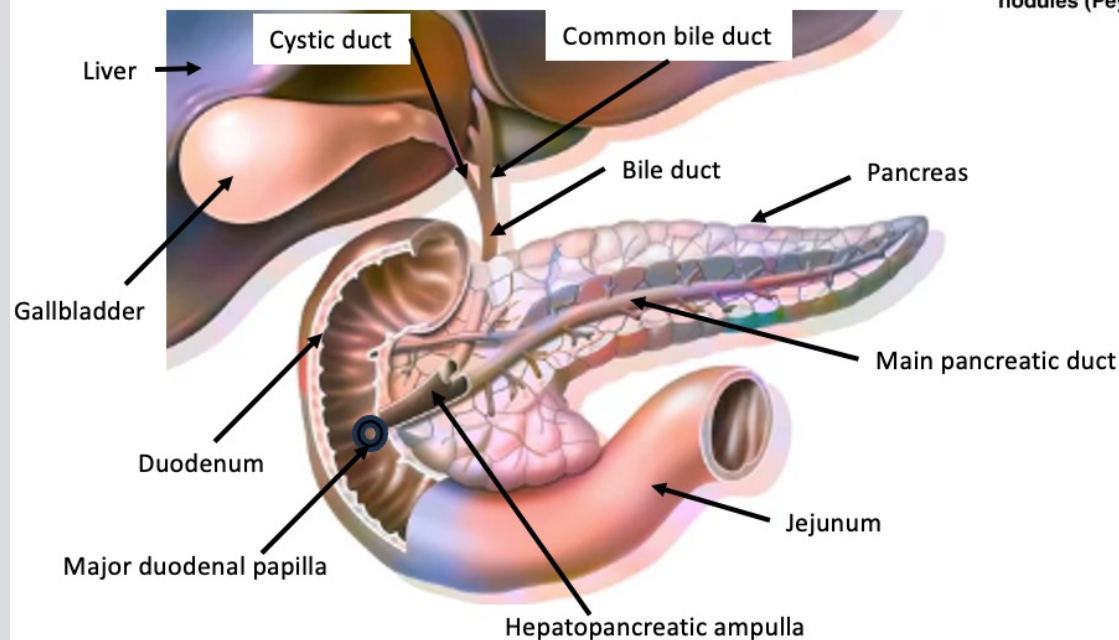
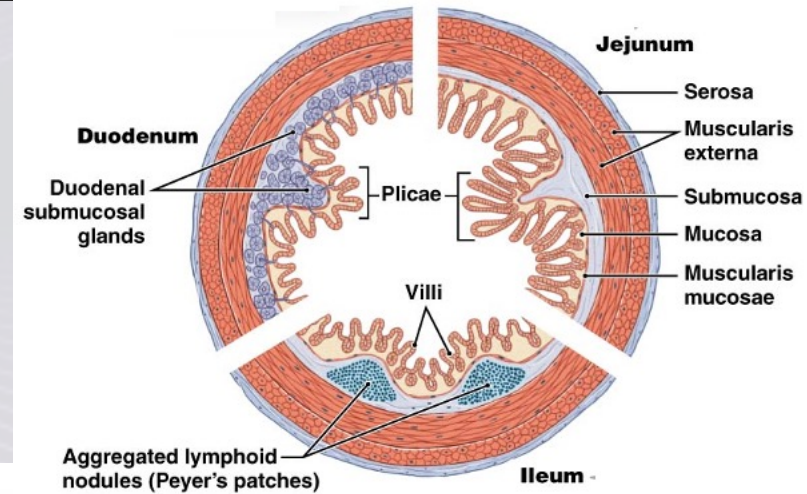
Small Intestine

- Tract:
 - A. Duodenum
 - B. Jejunum
 - C. Ileum
- Histology:
 - ❖ Mucosa
 - Plicae
 - Villi
 - Microvilli
 - Lacteals
 - ❖ Submucosa
 - ❖ Muscularis externa
 - Longitudinal muscle
 - Circular muscle
 - ❖ Serosa
- Nervous plexus
 - ❖ Myenteric plexus
 - ❖ Submucosal plexus



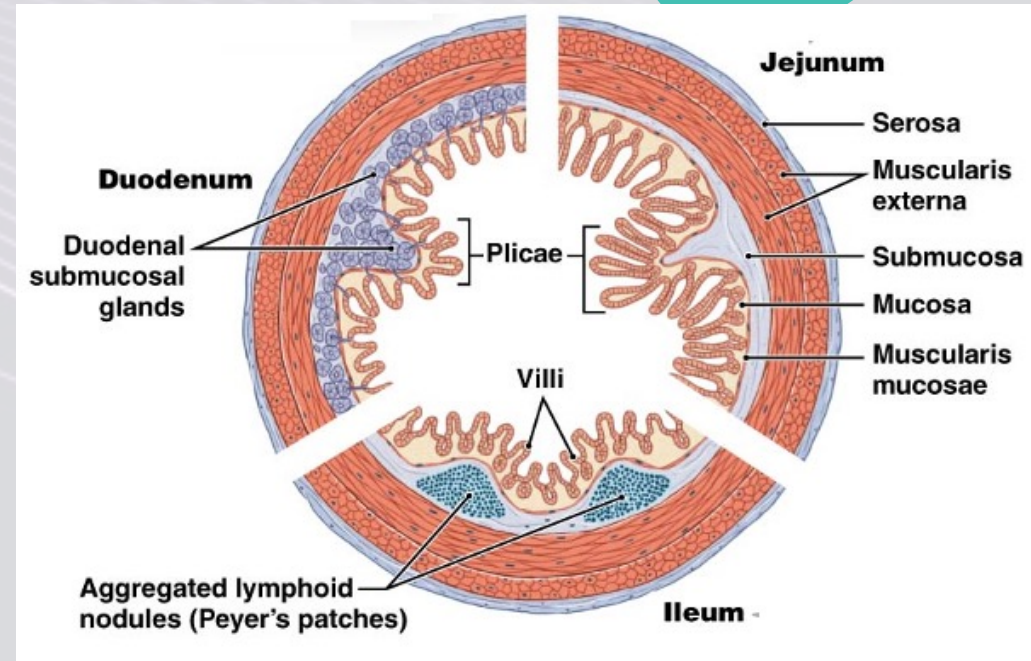
A. Duodenum

- 8-10 inches long
- Contains duodenal glands
 - ❖ Brunner's glands
 - Produce:
 - Mucus
 - Buffers



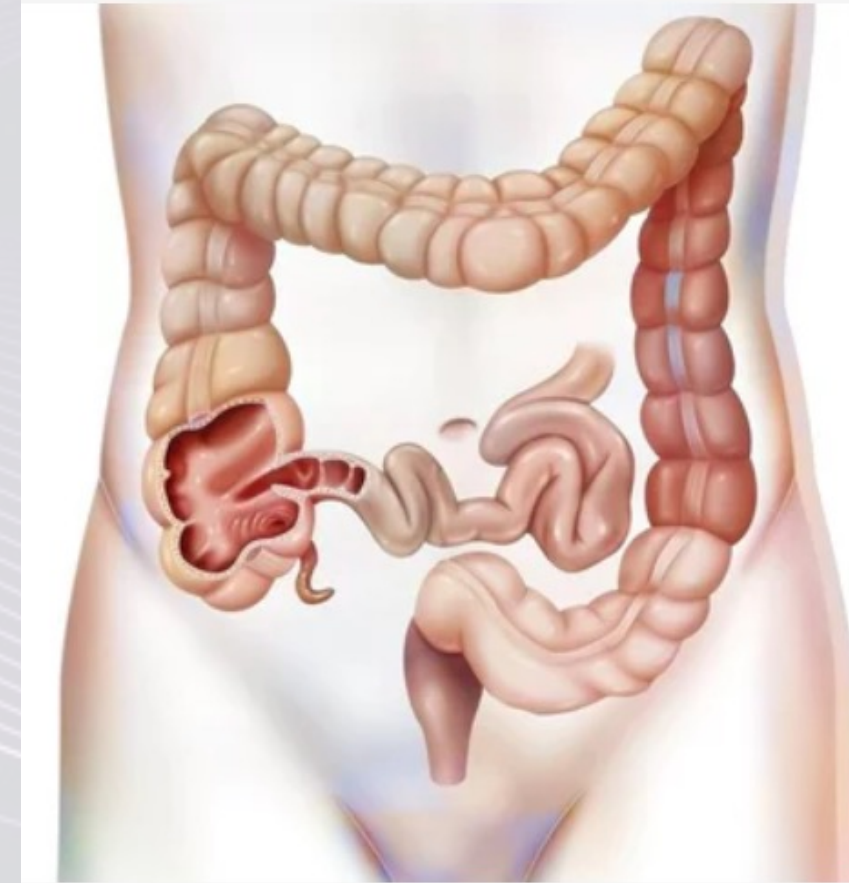
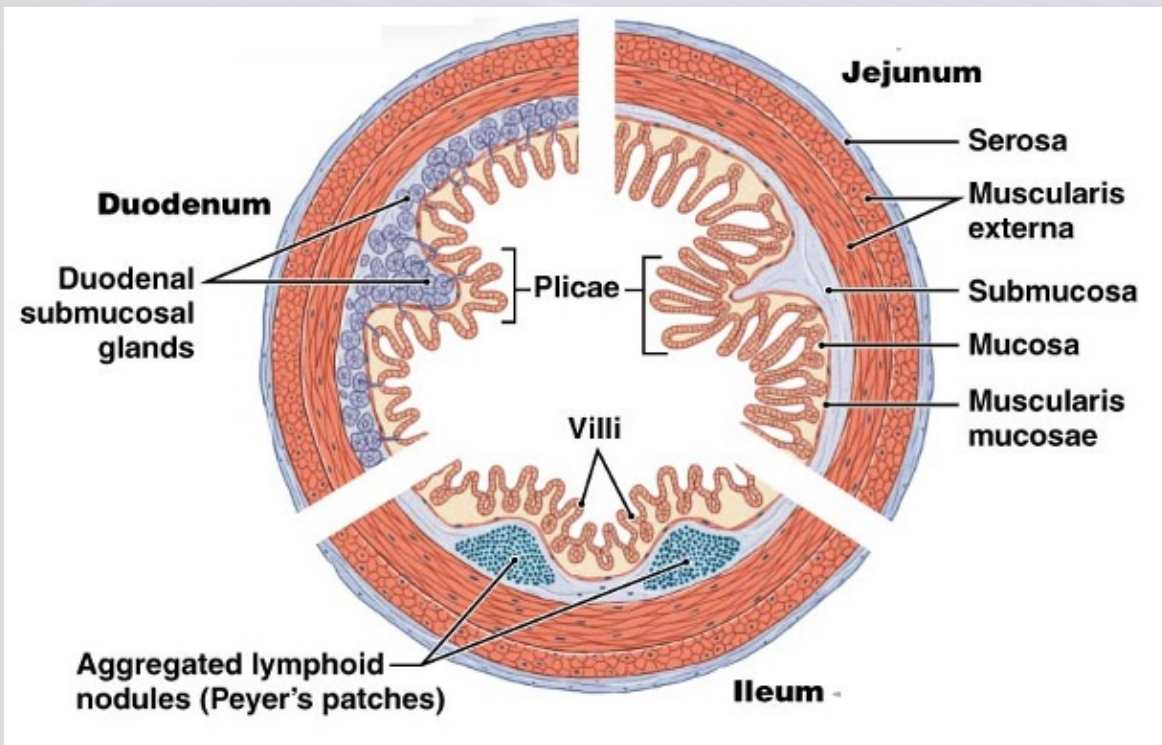
B. Jejunum

- 8 feet long
- Largest quantity of plicae and villi
 - ❖ ↑ Absorption



C. Ileum

- 10 feet long
- Aggregated lymphoid nodules
 - ❖ Peyer's patches
 - ❖ Located near ileocecal valve



Lab Models

